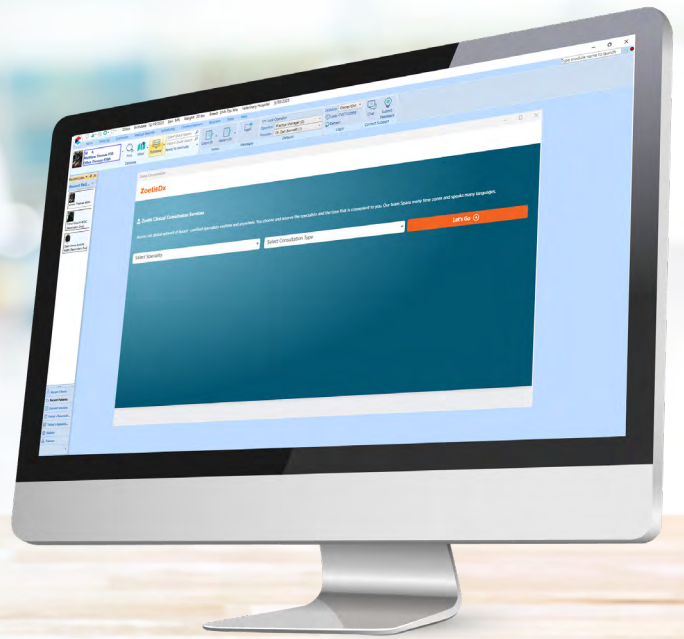




version 25.10.0

Release Notes



WHAT'S NEW

Zoetis® Consultation

Zoetis Clinical Consultation Services offer expert advice on diagnostics and individualized treatment plans for veterinary cases. All users can order Zoetis Clinic Consults directly from Impromed and have the results automatically added into the patient's medical record history. For quick access, add the Zoetis Diagnostic button to the Ribbon from Desktop Preferences.

Antech® v1 (Zoasis)

We have provided the option to use either the original Antech integration or take advantage of additional features in Antech HealthTracks. Users who upgrade will not automatically migrate to Antech HealthTracks but will have the option to enable the new integration.

Unified Installation Package for Impromed and Impromed Equine

Impromed and Impromed Equine are now combined into a single installation package. Users can enable the Equine Experience styling through Global Preferences.

Note: After enabling this feature, please close and reopen Impromed for the changes to take effect.

Additional Enhancements

- Security updates have been made.
- Improved the deletion process for client records and deceased patients to ensure future appointments are correctly marked with the appropriate deleted status.

ADDITIONAL RELEASE ITEMS

Accounts Receivable

141736	If split billing is updated after an invoice has been concluded, the changes will still apply—split billing will work for those concluded invoices.
419412	When emailing statements, the program will follow the Default Client Account Settings for Send Statements Method.
419485	If a wellness plan is cancelled, the transaction history line will show “Cancelled Wellness Plan”.

Clinic Census

51168	The option to copy Census Locations has been added to the tab under Workstation Preferences.
-------	--

Covetrus Comms

435848	Increased the character limit for Covetrus Comms text messages from 200 to 1,000 characters, allowing for more detailed communication.
--------	--

Database

429680	The recheck workflow during invoicing has been revised to exclude prompts when the patient is not deceased.
--------	---

ADDITIONAL RELEASE ITEMS

Inventory

47131	Corrected the quantity removal from the correct Storage Location when location order is changed with the Invoices module open.
47398	When a product is removed from an invoice, its inventory returns to the original lot and cost expiration.
51448	Security enhancements were made in the Inventory Module regarding shortcuts to frequently used inventory tasks across multiple tabs.
52003	Low inventory alerts will automatically trigger when configured items are moved from estimates to invoices, ensuring proactive stock management.

Invoices

47563	The size of the Price Check window from the Desktop will be saved after modifications are made upon opening it.
53183	If an item is no longer available from Travel Sheets, a warning will appear when an attempt is made to add it to an invoice. At your request, Impromed will update the Travel Sheet to no longer show the item.
142889	Enhanced the product selection process when adding items to invoices, reducing errors and improving accuracy.
229571	Updated how SuperMode adjustments are applied to bundled components when transferring from Treatment Plans to invoices, ensuring consistency and accuracy.
437975	Improved how vaccine information is processed when concluding invoices, ensuring all related attachments are accurately captured and updated without errors.

ADDITIONAL RELEASE ITEMS

Lab Integrations

428970	In a multi-practice setup, lab requests cannot be created through Product Attachments for any lab partner that has been disabled.
429566	When setting up a Greywind provider link, duplicate employee names will not be displayed.
431811	Improved the lab results import process to prevent partial data updates and ensure all attachments are included.

Medical Records

158090	Text for treatment plan items will no longer overlap when using Print View from Medical Records.
380404	Yes/No lab field values now print correctly when entered through a SOAP.
429583	Resolved an error that previously prevented Ink Notes from being added successfully.
47592	Clicking “Email” from a Certificate within Medical Records now correctly populates the ‘TO’ field.

Reports

66842	All columns are now included when exporting the Vendor Purchase History report.
143814	Sort order now displays correctly both in the Aged Trial Balance report and exported files.
421322	Updated the Sales by Species report to include accurate transaction corrections and proper headers.

ADDITIONAL RELEASE ITEMS

Reports continued

432399	Updated the Controlled Substance Log Export report for all formats to include missing details.
77586	Improved the accuracy of exported dollar values in the Products Invoiced by Client report. This update ensures that when products are returned, the corresponding dollar amounts are now correctly reflected in the export.

Scheduler

226266	Printing labels from Scheduler for the day will now print in appointment order.
427465	Improved drag-and-drop functionality for appointments to ensure accurate view updates and tooltips.
428685	Calendar views now reflects the latest appointment details immediately after modifications.
430125	The appointment history view now correctly shows the latest revision of an appointment.
416330	Dashboard now filters appointments by category as expected.

Setup

80353	Improved the Setup Product Items workflow to ensure pricing reflects correctly when removing quantities less than one from inventory.
344841	Setup Product Items now supports unlinking products from inventory items, giving more control over inventory associations.

ADDITIONAL RELEASE ITEMS

Transaction Corrections

72150	The Change Employee correction now updates the Profit Center appropriately.
-------	---