



Medical Condition Record Locking in 19.10.0 and Above



855-478-7920 | 304 Ohio St. | Oshkosh, WI 54902
Revised June 27, 2019

Table of Contents

Locking a Medical Condition Record	3
Locking the Medical Condition Record	4
What Locks.....	4
What Doesn't Lock.....	4
Security Function.....	5
Lock MCR Utility	5

Locking a Medical Condition Record

AVImark has added the ability to lock the Medical Condition Record in AVImark version 19.10.0. This new feature allows users peace of mind that the medical record is locked and cannot be edited. Once an MCR is locked it cannot be unlocked. This allows us to know that the record has not been edited since it was locked.



Please note: there is no Utility to unlock the MCR.

AVI Medical Condition Tootsy Roll (Canine, S, 3y, 25.00), on 4/15/2019

Med Condition Import SOAP

Weight 0.00 lbs Temp 0.00 °C Heart Rate 0.00 /min Resp 0.00 /min CRT sec
BCS 0.00 of 9.00 Other of Pain Scale 0
Admitted By TWA: Tony Wilson, Admin Post For (none) Vitals Only

Problems
Presenting problem(s)
Code Description
<No data to display>

Problem History
Opened Op Description
<No data to display>

Subjective
+
-

Objective
R +
-

Check All Uncheck All

General Abdominal Palp.
Eye / Ear / Nose Musculoskeletal
Oral / Dental Neurologic
Integument Urogenital

Preview Report Card Lock Prev Next Done Cancel Help

Within the Medical Condition Record (MCR) there is now a Lock option at the bottom of the window.

Locking the Medical Condition Record

Click the Lock button at the bottom of the MCR and it will grey out.



It will display at the top of the MCR that it is Locked with the date, time, and the user who locked the MCR.

 Medical Condition (Locked 4/15/2019 2:12:09 PM TWA: Tony Wilson, Admin)

Again, a friendly reminder, once the MCR is locked; **there is absolutely no way to unlock it.**

What Locks

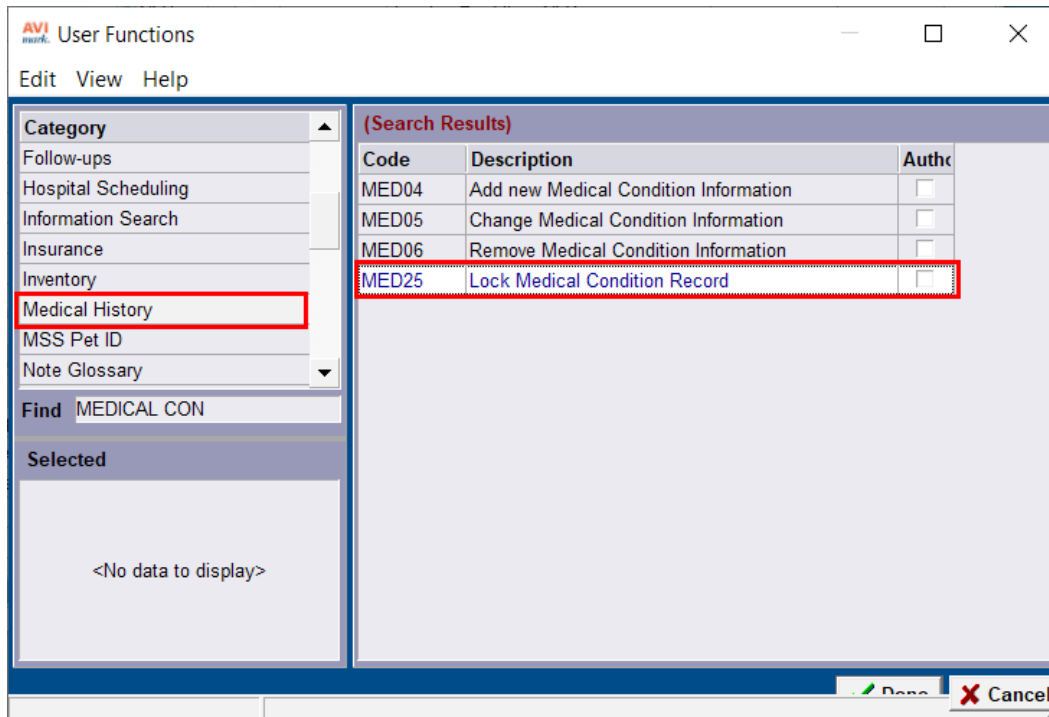
- ✓ All fields in the Vitals Section
- ✓ Presenting Problems and Problem History
- ✓ Subjective Notes
- ✓ Objective Notes, Abnormalities, Body Sub-Systems
- ✓ Assessment Notes, Diagnosis and Rule-Out entries
- ✓ Plan Notes, Therapeutic and Diagnostic entries
- ✓ More Stuff in Subjective, Objective, Assessment and Plan
- ✓ Moving the Medical Condition Record
- ✓ Removing the Medical Condition Record

What Doesn't Lock

- ✓ Attachments section
- ✓ Graph Vitals
- ✓ Print the Medical Condition Record
- ✓ Scroll bars in all areas of the window
- ✓ The + and – buttons in the notes window

Security Function

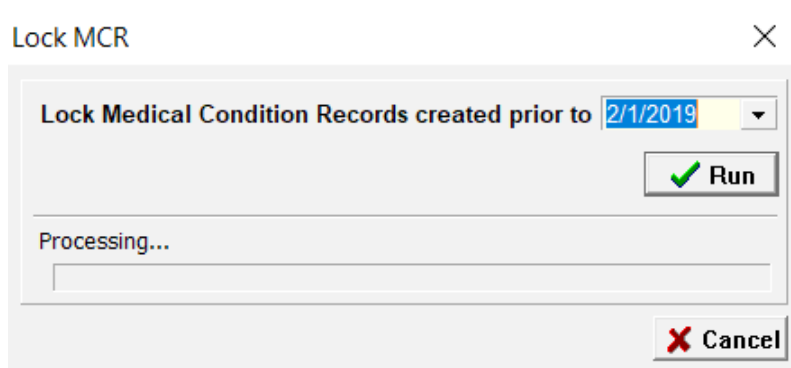
There is a new function within Users and Security that will allow users to restrict who has the ability to lock MCR, it is MED25 - Lock Medical Condition Record.



Lock MCR Utility

There is a utility that can be used to lock all MCR's from a specified date going back.

1. Remember that before running this utility to **take a backup**.
2. Within the AVImarkServer click on **Utilities| More Utilities**.
3. In the utilities window type in "**lockmcr**" and click **OK**.
4. The LockMCR utility will open:



5. Set a start date and click **Run**.

The utility will lock all Medical Condition Records in AVImark starting at the date specified going back.



To lock **ALL** Medical Condition Records, leave the date field blank.